

Property Information

For Lease // 6501 4th Street

Lubbock, TX



Offering Summary

Lease Rate:	Call for pricing
Building Size:	5,644 SF
Available SF:	5,644 SF
Zoning:	C-3
Traffic Count:	±24,000

Property Overview

This 5,644 SF second-generation free standing restaurant is located on the Southwest side of the Milwaukee and 4th Street intersection. Surrounded by residential developments, this location sees consistent day time traffic counts. This property is located across the street from United Supermarkets and other retailers in the area include Dollar General, Walmart, Wendy's, and Starbucks. This location offers excellent ingress and egress, with over 90 parking spaces. All FF&E will convey.

Property Highlights

- Freestanding, second generation restaurant
- Shadow anchored by United Supermarkets
- 90+ parking spaces
- Rapidly growing retail corridor
- All FF&E convey
- Nearby retailers include Starbucks, Great Clips, Walmart

CMSProperties

806.794.1492

6306 Iola Ave, #200, Lubbock, TX 79424

bproctor@cmspropertiesinc.com

806.794.1492

CMSProperties

40312027040

Retailer Map

For Lease // 6501 4th Street

Lubbock, TX



Google

Map data ©2020 Imagery ©2020, Maxar Technologies, U.S. Geological Survey, USDA Farm Service Agency

CMSProperties

806.794.1492

6306 Iola Ave, #200, Lubbock, TX 79424

bproctor@cmspropertiesinc.com

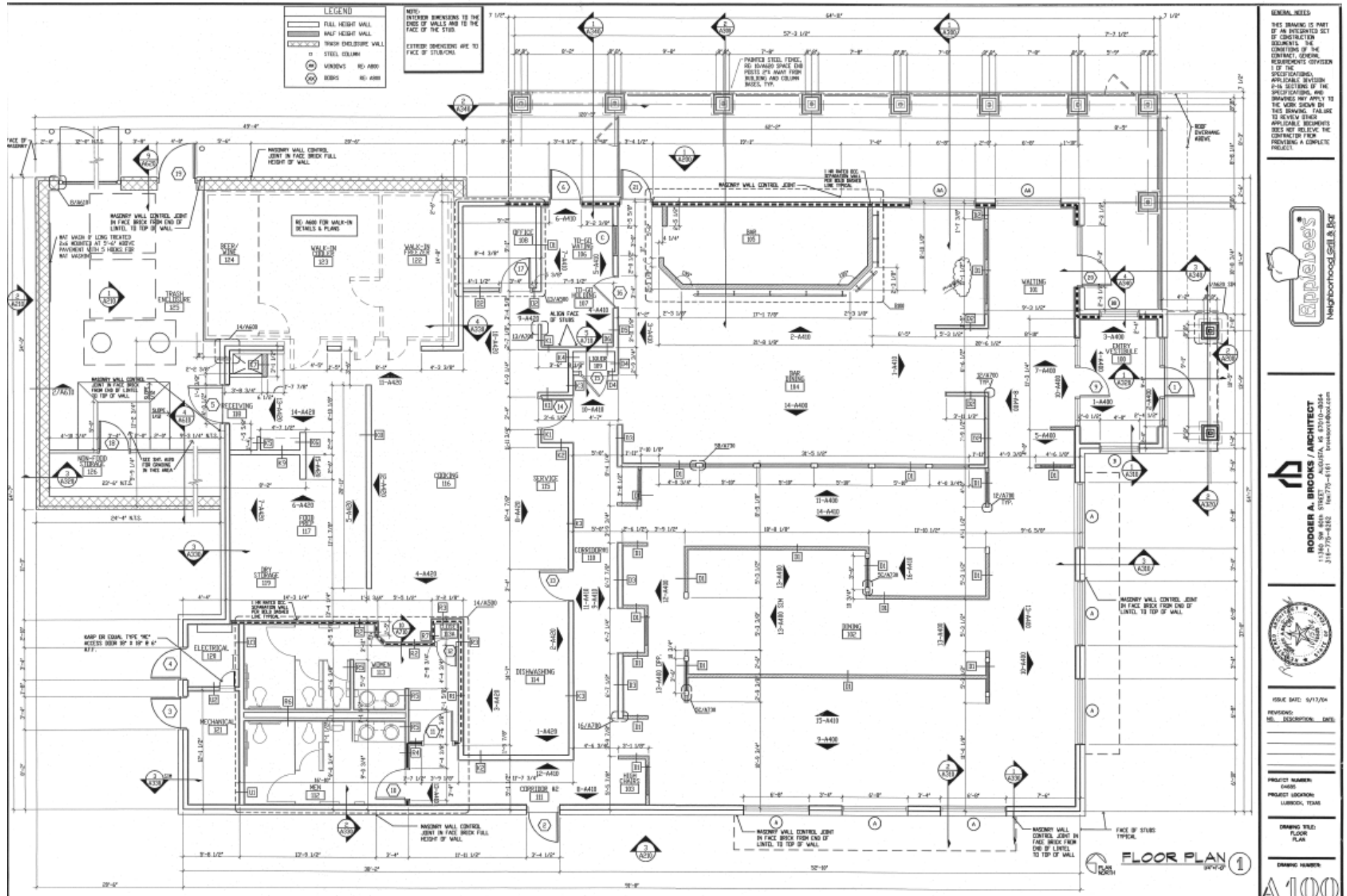
806.794.1492

CMSProperties

FLOOR PLAN

For Lease // 6501 4th Street

Lubbock, TX



CMSProperties

806.794.1492

6306 Iola Ave, #200, Lubbock, TX 79424

bproctor@cmspropertiesinc.com

806.794.1492

CMSProperties